



BTW

DESIGNER TILES, PAVERS

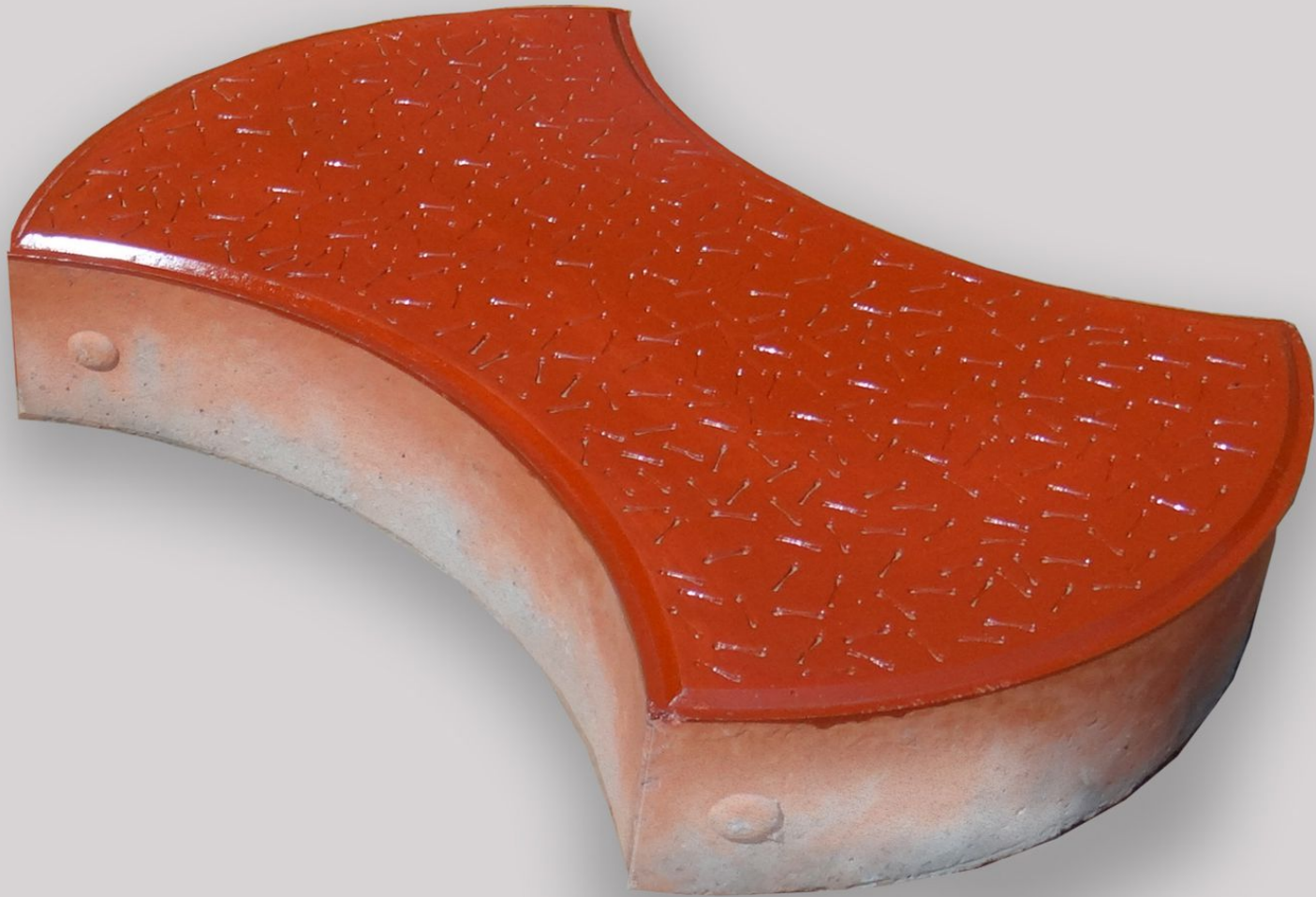
Designer Concrete Tiles for Walls, Floors and Steps

P.O.Pappinisseri,

Ph: 0497 2787332,2787336

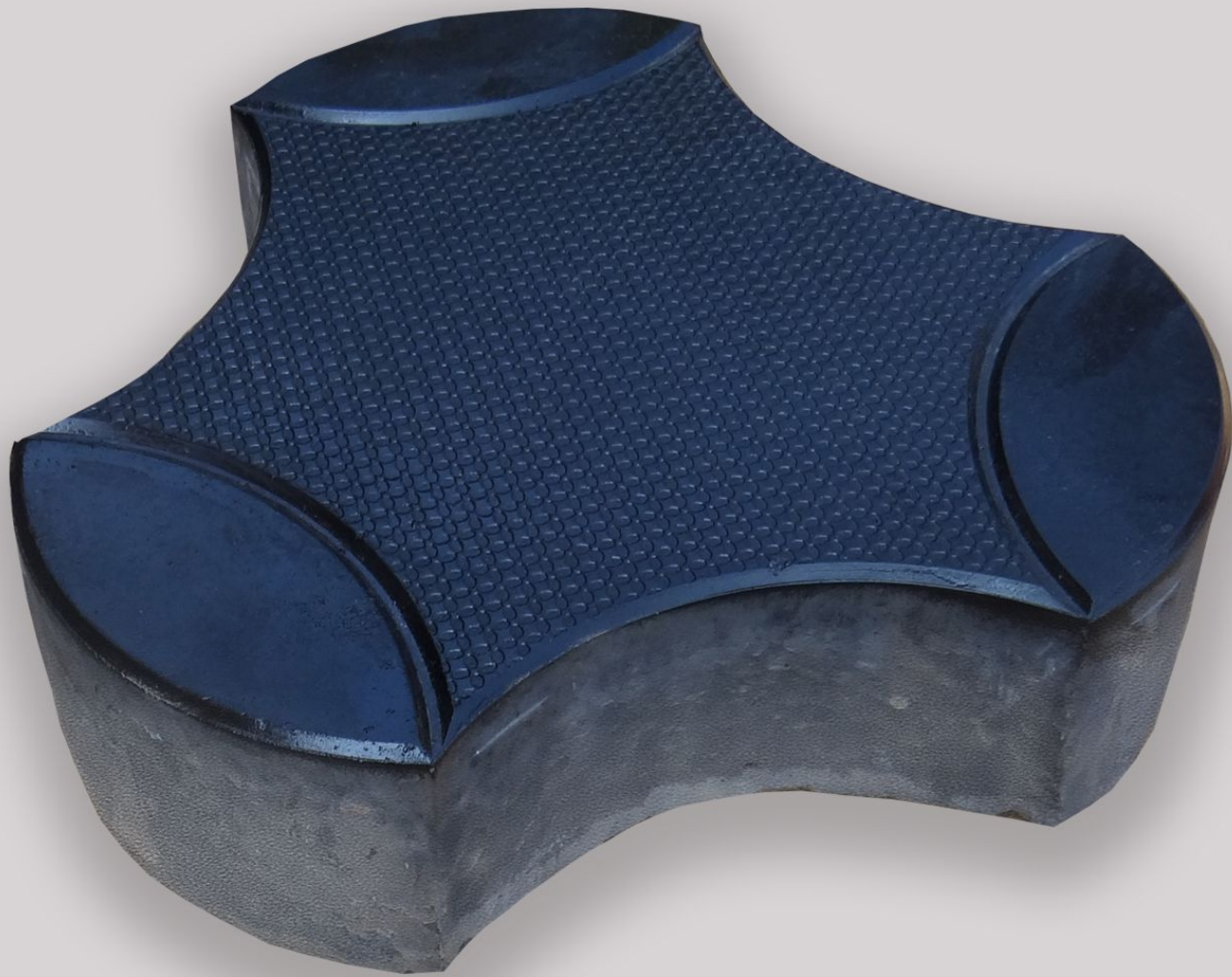


Creative Expressions from Nature



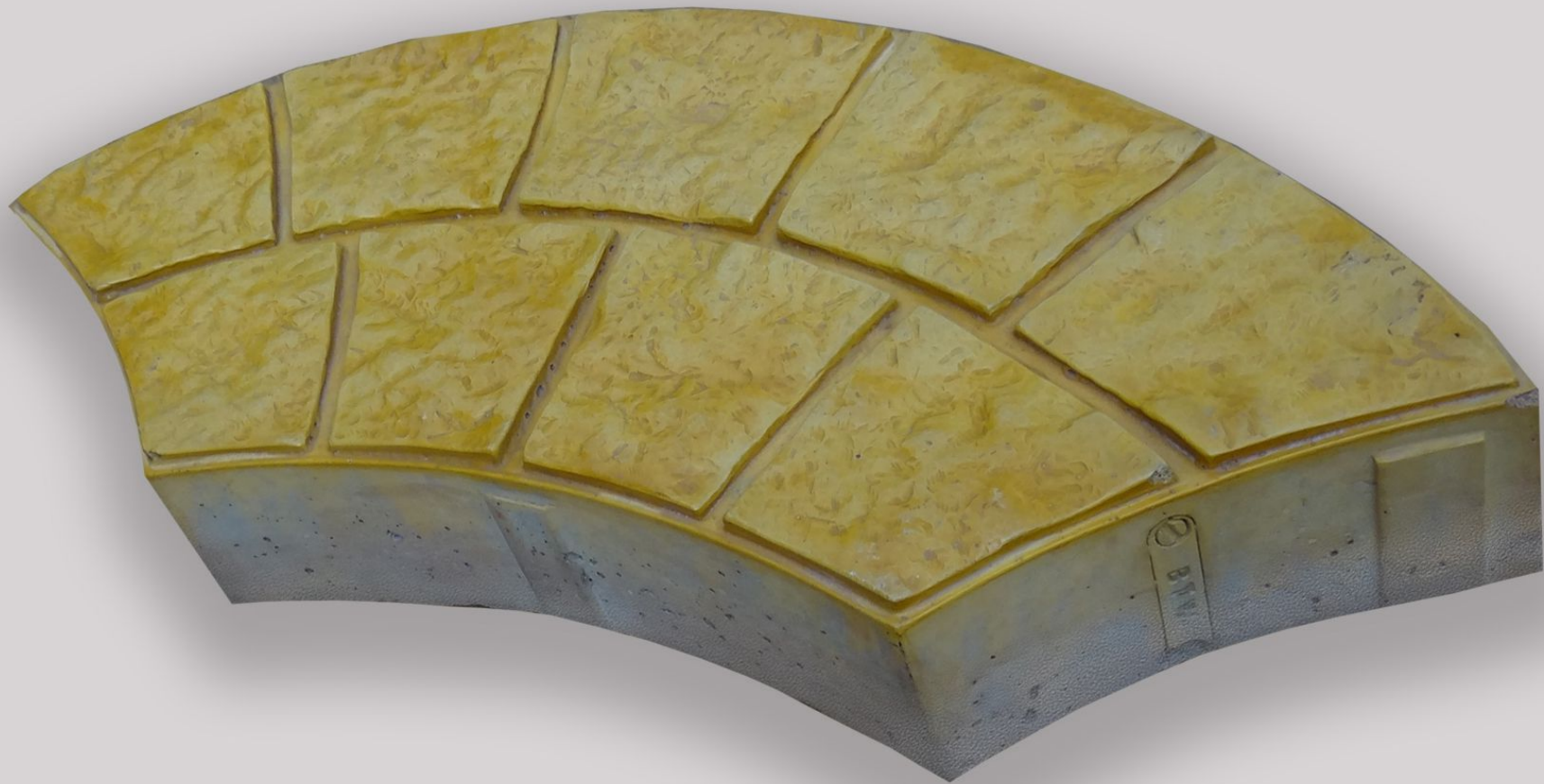
Axe Paver

270x190x60mm. App. 2.25nos/sq Ft



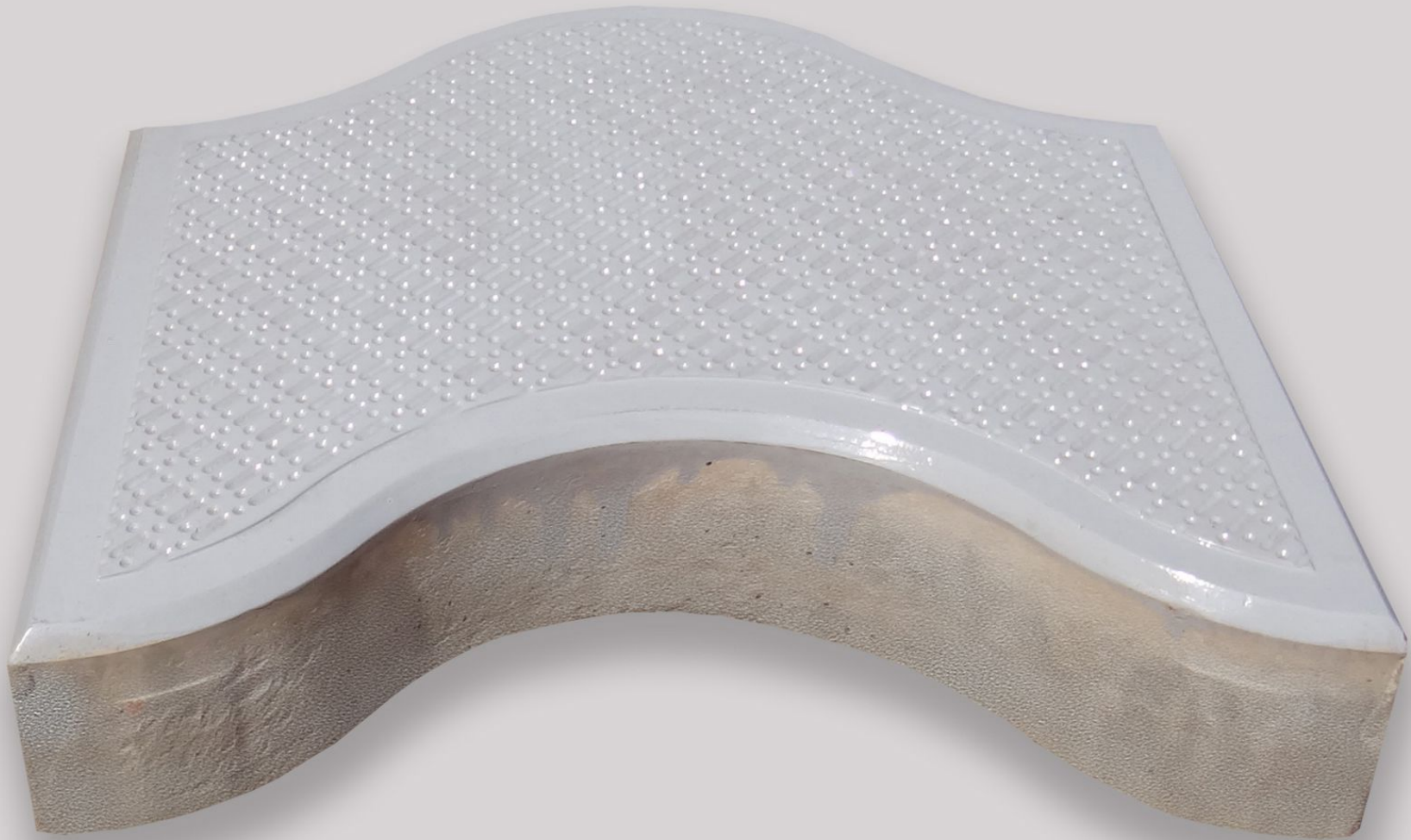
Hutch Paver

250x265x60mm. App 2nos/sq Ft



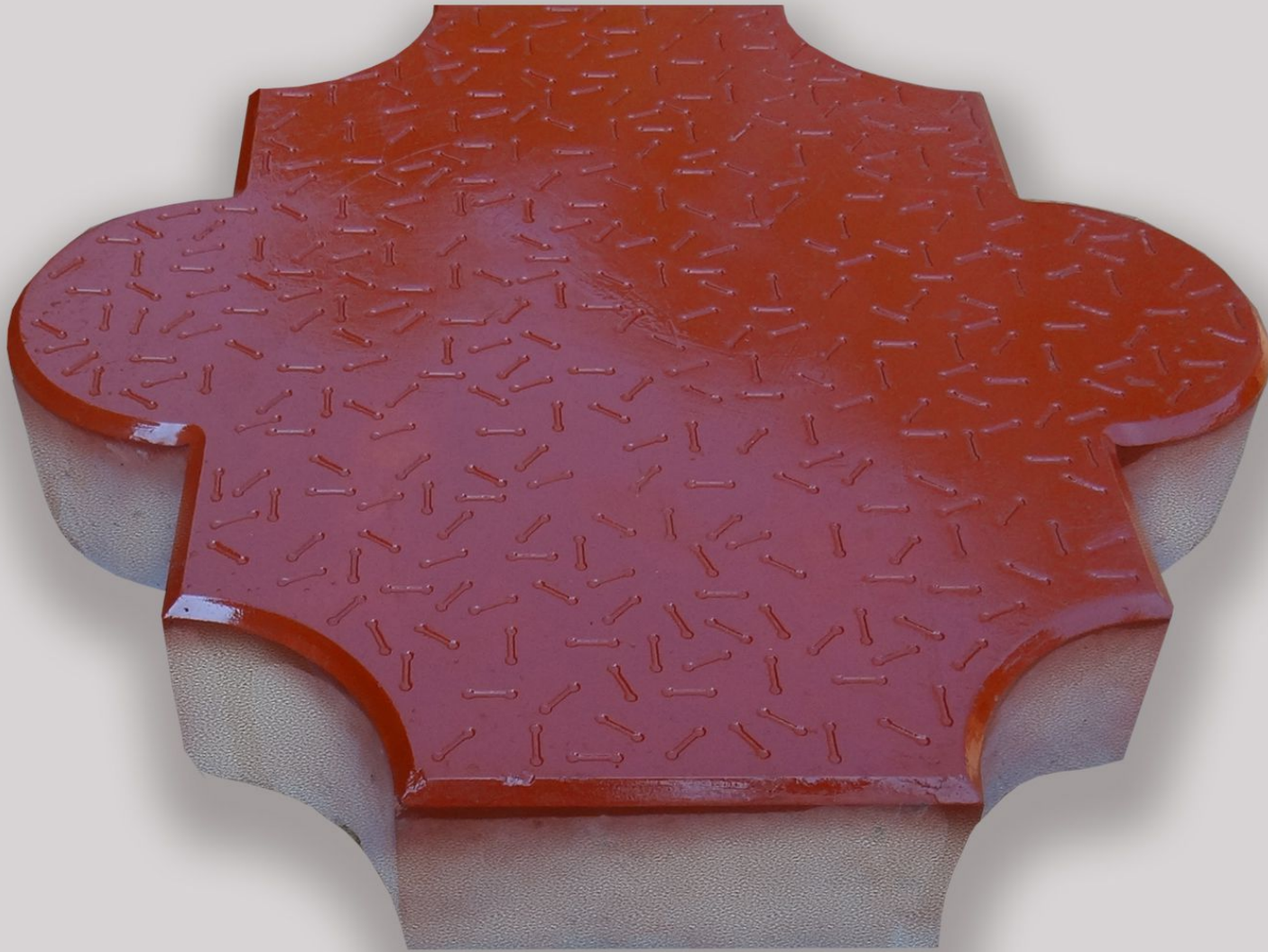
Rock Paver

390x150x60mm. App 1.95nos/sq Ft



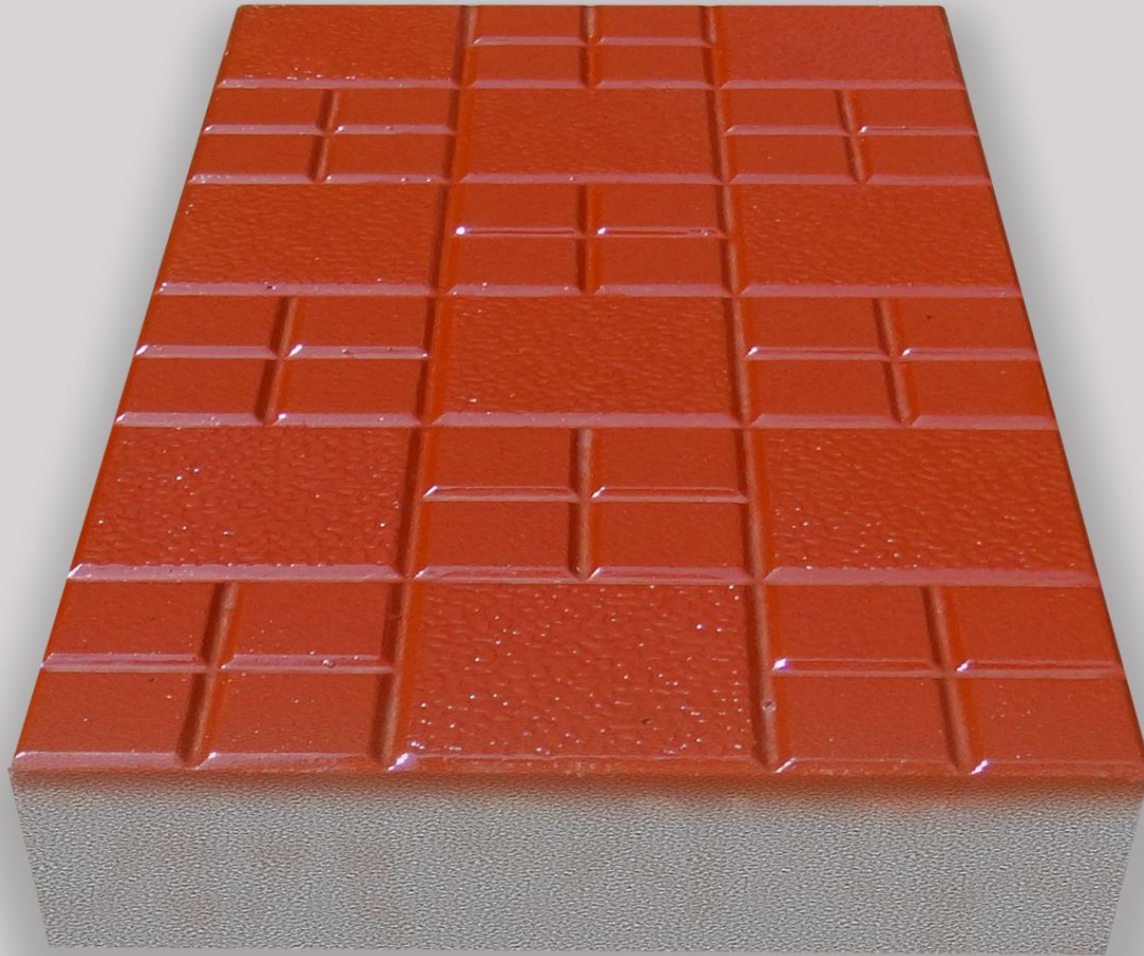
Arc Paver

260x185x60mm. App 1.80/sq Ft



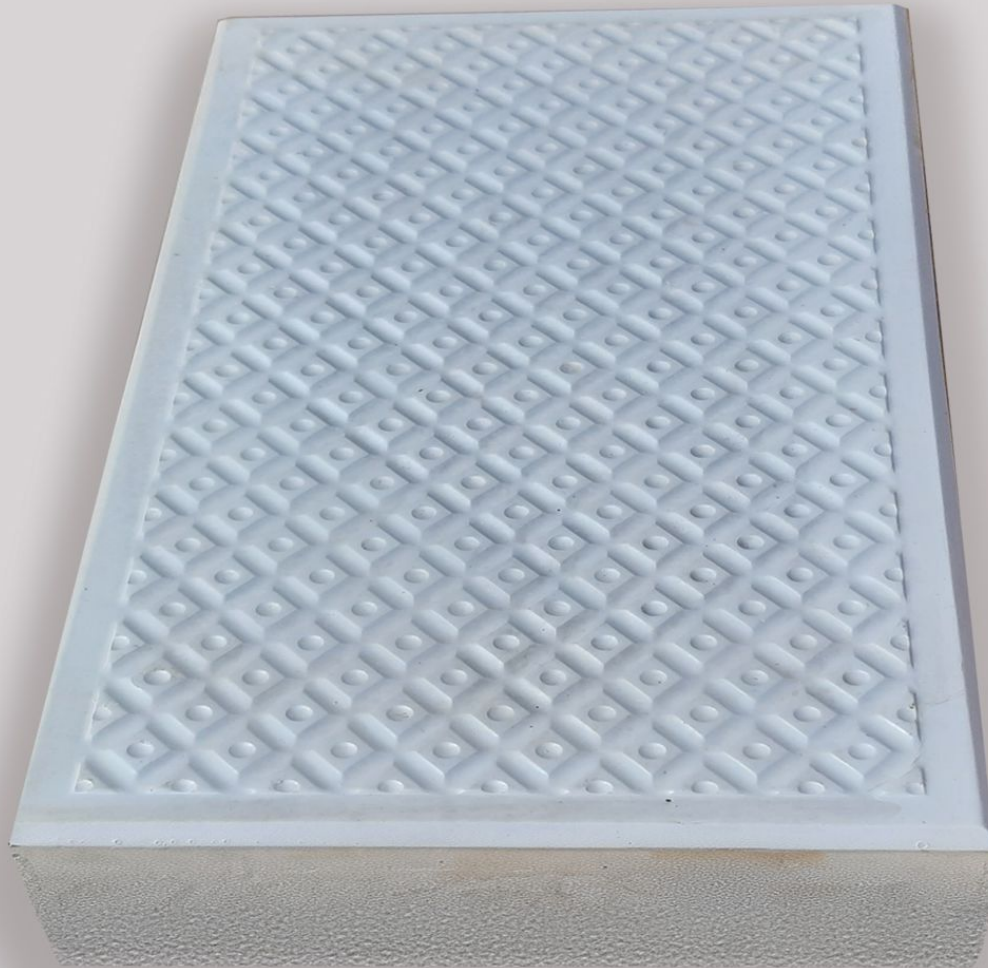
Caspro Paver

310x310x60mm. App1.30nos/sq Ft



Check Paver

308x154x60mm. App 2nos/ sq Ft



Brick Paver

308x154x60mm. App 2 nos/sq Ft



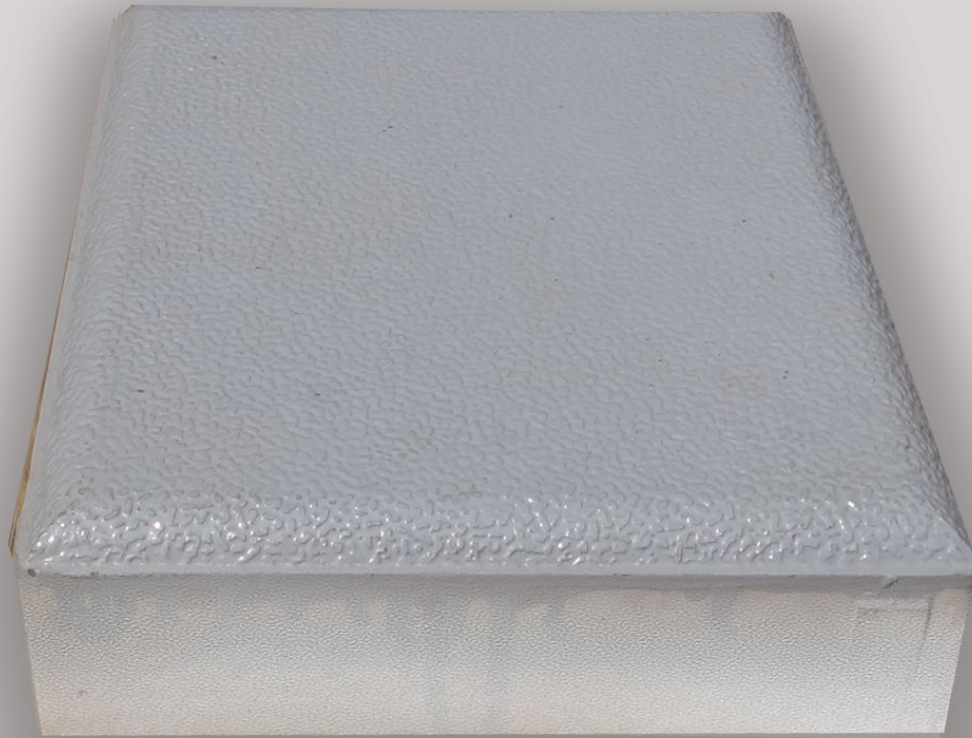
Stone Brick Paver

308x154x60mm. App 2 nos/sq Ft



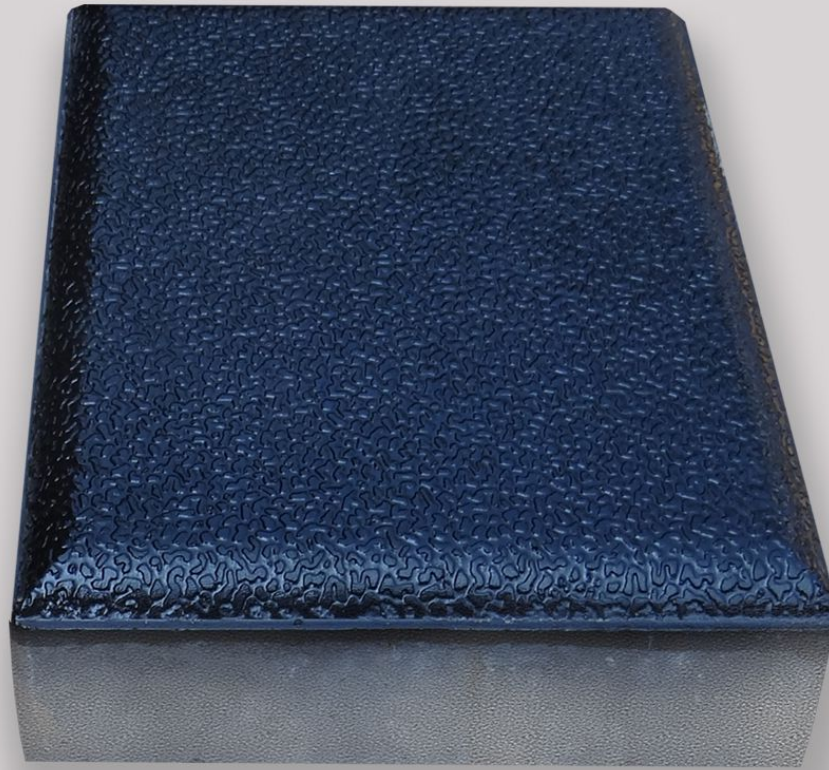
Flexi Paver 'A

275x200x60mm. App 1.60nos/sqFt



Flexi Paver 'B

230x200x60mm. App 2nos/sqFt



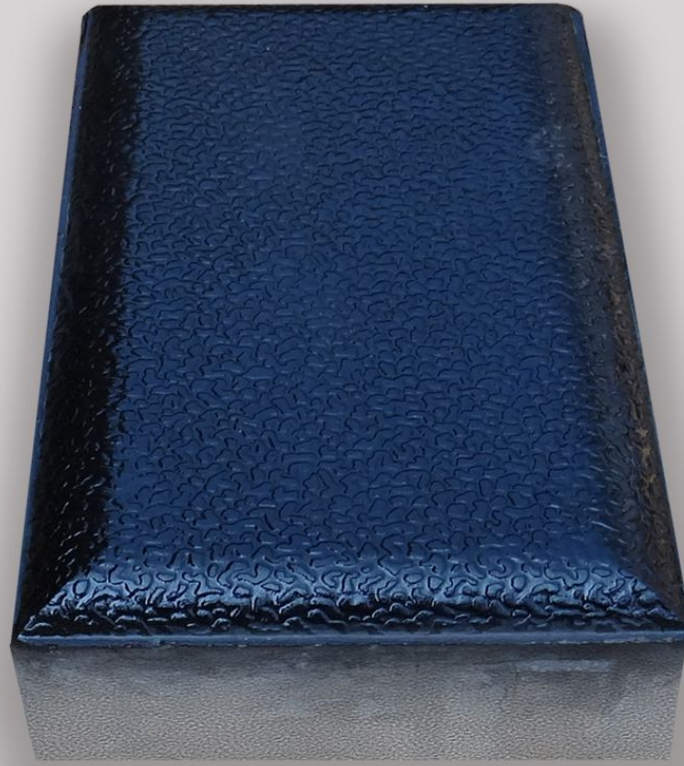
Flexi Paver 'C

200x178x60mm. App 2.6nos/sqFt



Flexi Paver 'D

200x125x60mm. App 3.60nos/sq Ft



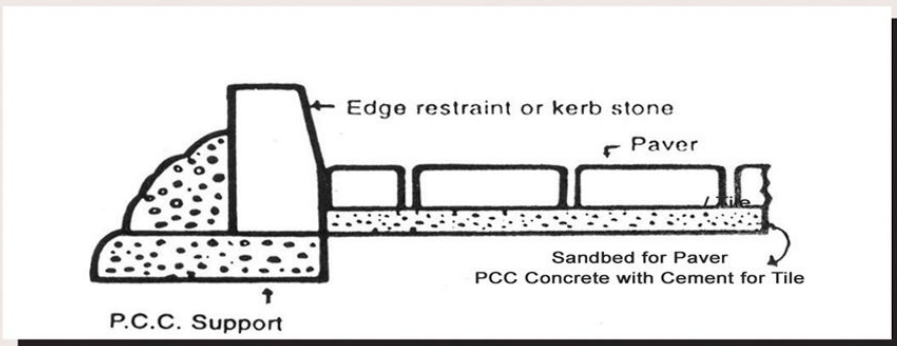
Flexi Paver 'E

200x100x60mm. App 4.5nos/sq Ft



Kerb Stone
255x205x85mm

METHOD OF LAYING



For Pavers: Spread Sand on the area to be laid on an average of 50mm thickness, Compact and screed the sand



Ensure the Pavers are Layed closely



The Pavers are compact for uniform surface

■ Care Should be Taken to SORT out the TILES/PAVER before laying for any manufacturing or COLOR difference

Please note that the Sizes & Designs of all Products are liable to be changed without NOTICE

Baliapatam Tiles 
and Business Ventures Ltd.

P.O. Pappinisseri- 670561, Kannur Dist, Kerala State.

Phone: Off: 0497- 2787332, 2787336. Fax: - 0497- 2787336

E.Mail: cnn_btwtiles@sancharnet.in www.btwbricks.com